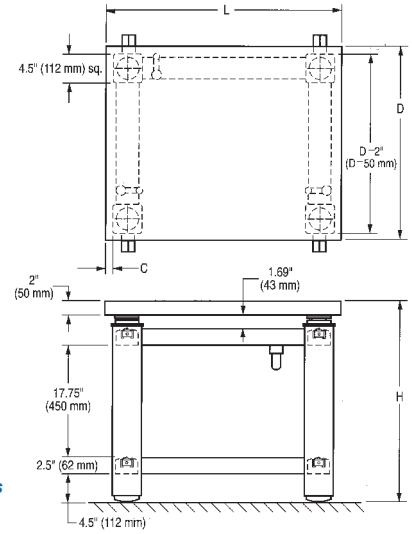
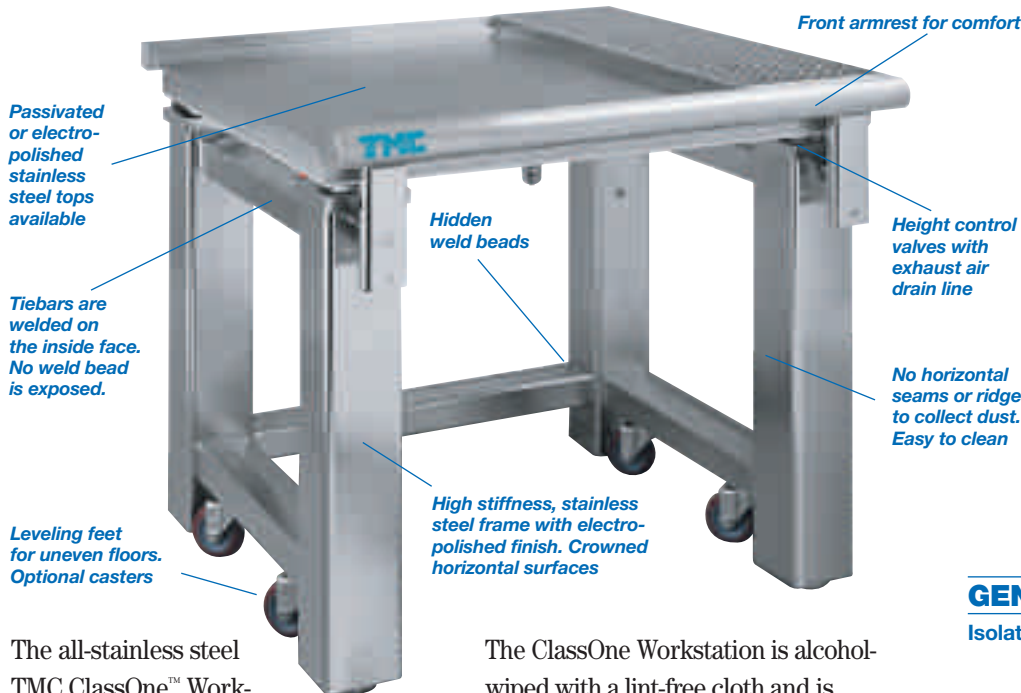


63-600 SERIES

ClassOne™ Workstation



GENERAL SPECIFICATIONS

Isolator natural frequency:

- High Input**
- Vertical = 1.2 Hz
- Horizontal = 1.0 Hz
- Low Input**
- Vertical = 1.5-2.0 Hz
- Horizontal = 1.2-1.7 Hz

Isolation efficiency @ 5 Hz:

- Vertical = 70 - 85%
- Horizontal = 75 - 90%

Isolation efficiency @ 10 Hz:

- Vertical = 90 - 97%
- Horizontal = 90 - 97%

Gross load capacity:

1,400 lb (640 kg)

Net load capacity:

350 lb (160 kg)

Finish: Electropolished stainless steel frame, passivated or electro-polished stainless steel top

Facilities required:

80 psi nitrogen or air

The all-stainless steel TMC ClassOne™ Workstation is a high-performance, pneumatic vibration isolation table designed from the floor up for maximum cleanroom compatibility. Isolation is provided by the same Gimbal Piston™ element that provides unsurpassed performance in isolating optical tables, electron microscopes, precision balances, and scanning tunneling microscopes.

The ClassOne Workstation is alcohol-wiped with a lint-free cloth and is double-wrapped in plastic at the factory prior to shipping.

How to Order

The basic table includes a front support bar. Options include shelves, rear support bar (required to mount shelves), and casters. The shelves include a pattern of 0.4 in. (10 mm) holes on 1 in. centers. The accessories available for the 63-600 Series ClassOne Workstation are specified separately.

Table Ordering Chart

Table Model		L	D	H	C
Complete Table and Armrest with Passivated Stainless Steel Top	Complete Table and Armrest with Electropolished Stainless Steel Top				
63-631	63-635	35 in. (875 mm)	30 in. (750 mm)	30 in. (750 mm)	1/2 in. (13 mm)
63-641	63-645	47 in. (1,175 mm)	30 in. (750 mm)	30 in. (750 mm)	6 1/2 in. (163 mm)
63-661	63-665	47 in. (1,175 mm)	36 in. (900 mm)	30 in. (750 mm)	2 in. (50 mm)
63-671	63-675	60 in. (1,500 mm)	36 in. (900 mm)	30 in. (750 mm)	8 1/2 in. (213 mm)
Accessory Model	Description				
81-302-05	Rear support bar & mounting clamps	35 in. (875 mm)			
81-302-06	Rear support bar & mounting clamps	47 in. (1,175 mm)			
81-302-07	Rear support bar & mounting clamps	60 in. (1,500 mm)			
81-312-06	10 in. (25 mm) wide sliding shelf		30 in. (750 mm)		
81-312-07	10 in. (25 mm) wide sliding shelf		36 in. (900 mm)		
83-015-01	Casters, set of 4				