



GREENLEE®

A Textron Company

920XC Handheld Singlemode OTDR



There With YouSM
faster • safer • easierTM

HOLEMAKING | BENDING | FISHING/CABLE PULLING/MATERIAL HANDLING | WIRE & CABLE TERMINATION | VOICE/DATA/VIDEO | TESTING & MEASUREMENT | STORAGE



GREENLEE®

A Textron Company

920XC Handheld Singlemode OTDR

Cable Acceptance Testing and Fault Locating

Greenlee's 920XC is a handheld, full-featured OTDR for cable acceptance testing and fault locating. The Autotest function automatically chooses the optimal measurement settings, scans the fiber under test and performs fiber analysis displaying length of fiber, loss of each event in an easy to read table. The user may also use the graphical user interface to navigate the trace signature for more detailed views of specific fiber events.

The 920XC series handheld OTDR is designed to fully embody the user's convenience with its large color LCD display and graphical user interface. The user can activate the measurements function easily by the press of one button. The 920XC series OTDR is indispensable and the ideal tool that all telecom service providers, CATV and contractors need in their toolbox.

FEATURES

- Economical
- Compact handheld design
- Easy to use
- Fast automated testing
- Up to 35db dynamic range
- Large backlight LCD display
- Measure length and defects of coiled fiber
- Fiber analysis software for data management and report generation
- RS-232/USB interface
- NiMH batteries for 5 hours continuous use



Protective rubber boot

Menu functions
for settings and trace store and recall.

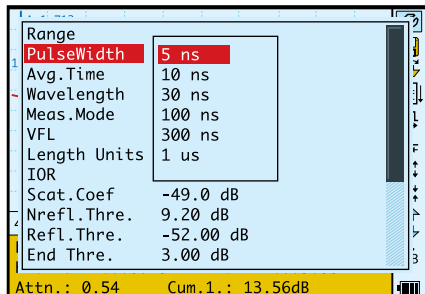
Large color LCD display

Run/Stop button
to automatically chose setting and run OTDR test.

Sealed membrane panel

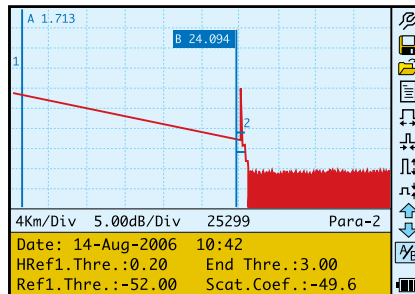
Introducing Greenlee's Handheld Singlemode OTDR

OTDR Operation Modes



Instrument Setup

- Auto mode selects optimal distance range and pulsewidth
- All settings are selected through easy to use menu selections
- Short pulsewidth (5ns) available for hi-resolution measurements
- Color and high intensity monochrome settings for bright sunlight conditions
- Complete control of fiber analysis settings for auto measurement of splice and end of fiber



OTDR Trace

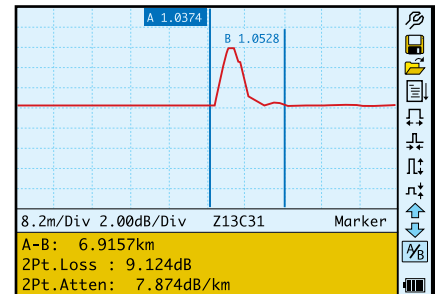
- View and measure test results
- One button measurement of all distance and loss information

Event View Mode – user can page through each loss event for location in (meters/miles and feet) and loss in dB

Manual Measurement Mode – use can perform manual measurement with A and B cursor for distance, loss and reflectance measurements

Measurement Setup – user can view settings used to acquire measurement

Fiber Analysis Software – user can view settings used for auto measurement of events

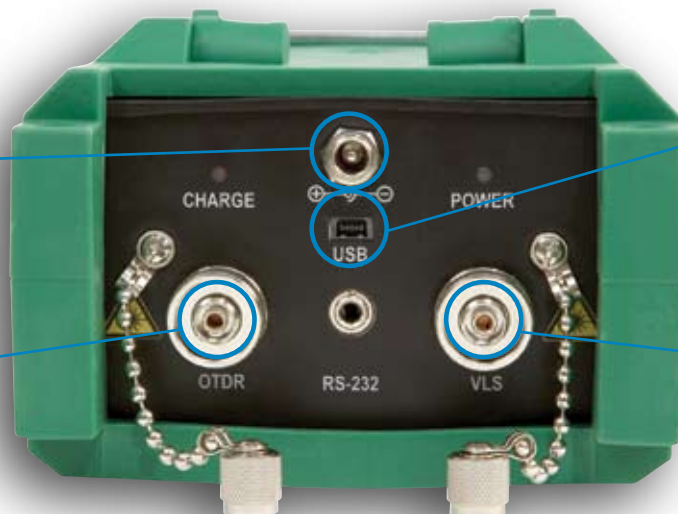


Hi-Resolution Event Viewing

- Easy to view and measure in high resolution mode
- One button to jump to hi-resolution view
- One button jump back to entire trace view
- 0.1 meter sampling resolution
- Active cursor snaps to the next event in the fiber analysis table snaps to the next event in the fiber analysis table

DC charger port

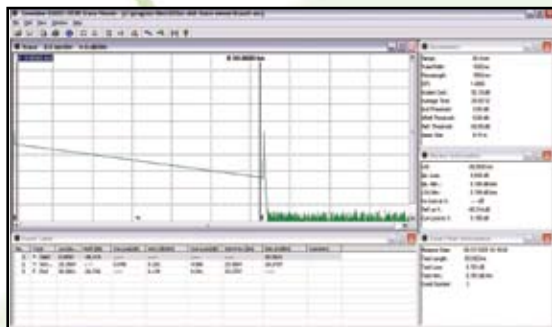
OTDR port with dust cover.



USB port
for data transfer.

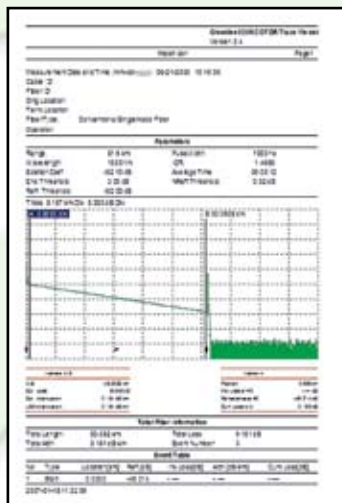
Visual fault locator port
with dust cover
(920XC-20C only).

OTDR Cable Acceptance Report Generation



OTDR Trace Viewer

- View and measure all traces files stored on the 920XC.
- Bellcore file storage format.
- Display trace, fiber events and measurement information on single screen.
- Display measurement settings used to acquire trace.



Cable Acceptance Report

- Generate professional OTDR cable acceptance reports.
- Cable acceptance report can be customized by user.
- Trace and fiber events printed on each report.

SPECIFICATIONS

Optical				
	920XC-13A	920XC-15A	920XC-20C	
Fiber Type	9/125 SM	9/125 SM	9/125 SM	
Wavelength (± 20nm)	1310	1550	1310	1550
Dynamic Range (dB)	27	27	35	35
Event deadzone (m)	3.5	3.5	2.5	2.5
Attenuation Deadzone (m)	20	20	14	14
Emitter Type	Laser			
Pulsewidth (ns)	12ns, 25ns, 100ns, 275ns, 1us, 2.5us		5ns, 10ns, 30ns, 100ns, 300ns, 1us, 2.5us, 10us, 20us	
Selectable Ranges (km)	1.3, 2.5, 5, 10, 20, 40, 80, 120		0.3, 1.3, 2.5, 5, 10, 20, 40, 80, 120, 160, 240	
Average Time	15s/30s/1 min/2 min/3 min			
Distance measurement accuracy	±(1m + 5 X 10 ⁻⁵ x distance + sampling space)			
Linearity	<0.03 dB/dB			
Connector Type	PC or APC (interchangeable FC, SC, ST)			
Visual Fault Locator (920XC-20C only)				
Wavelength	n/a		650 nm	
Peak power output	n/a		3 mw	
Connector interface	n/a		(interchangeable FC, SC, ST)	
Fiber Analysis Software				
Reflection detect accuracy	±4 dB			
Attenuation detect accuracy	±0.05 dB/dB			
Measurement data storage	300 test curves			
Data transmission	RS-232/USB port			
General				
Power Supply	NiMH chargeable battery/AC adapter			
Battery Life	Support over 5 hours operating on one charge or over 20 hours standby			
Operating Temperature	-10° to 50° C			
Storage Temperature	-20° to 60° C			
Relative Humidity	0 to 95% (non-condensing)			
Weight	1.9 lbs. (0.87 kg)			
Dimensions	7.7" H x 3.9" W x 2.4" L (196mm x 100mm x 64mm)			

Cable Acceptance Testing and Fault Locating

920XC Product Configuration - Model Numbers

920XC-13A 1310nm OTDR

MODEL. NO.	UPC NO.	OTDR DESCRIPTION	CONNECTOR POLISH	POWER SUPPLY	OPTICAL CONNECTOR
920XC-13A-UPC-NAFC	89822	Singlemode 1310nm Handheld OTDR	UPC	American standard AC/DC Adapter, Input: 100~240V	FC
920XC-13A-UPC-EUFC	89823	Singlemode 1310nm Handheld OTDR	UPC	Europe standard AC/DC Adapter , Input: 100~240V	FC
920XC-13A-UPC-JAFC	89824	Singlemode 1310nm Handheld OTDR	UPC	Japanese standard AC/DC Adapter, Input: 100~240V	FC
920XC-13A-UPC-UKFC	89825	Singlemode 1310nm Handheld OTDR	UPC	United Kingdom standard AC/DC Adapter, Input: 100~240V	FC
920XC-13A-UPC-AUFC	89826	Singlemode 1310nm Handheld OTDR	UPC	Australia standard AC/DC Adapter, 100~240V	FC
920XC-13A-UPC-NAST	89827	Singlemode 1310nm Handheld OTDR	UPC	American standard AC/DC Adapter, Input: 100~240V	ST
920XC-13A-UPC-EUST	89828	Singlemode 1310nm Handheld OTDR	UPC	Europe standard AC/DC Adapter , Input: 100~240V	ST
920XC-13A-UPC-JAST	89829	Singlemode 1310nm Handheld OTDR	UPC	Japanese standard AC/DC Adapter, Input: 100~240V	ST
920XC-13A-UPC-UKST	89830	Singlemode 1310nm Handheld OTDR	UPC	United Kingdom standard AC/DC Adapter, Input: 100~240V	ST
920XC-13A-UPC-AUST	89831	Singlemode 1310nm Handheld OTDR	UPC	Australia standard AC/DC Adapter, 100~240V	ST
920XC-13A-UPC-NASC	89832	Singlemode 1310nm Handheld OTDR	UPC	American standard AC/DC Adapter, Input: 100~240V	SC
920XC-13A-UPC-EUSC	89833	Singlemode 1310nm Handheld OTDR	UPC	Europe standard AC/DC Adapter , Input: 100~240V	SC
920XC-13A-UPC-JASC	89834	Singlemode 1310nm Handheld OTDR	UPC	Japanese standard AC/DC Adapter, Input: 100~240V	SC
920XC-13A-UPC-UKSC	89835	Singlemode 1310nm Handheld OTDR	UPC	United Kingdom standard AC/DC Adapter, Input: 100~240V	SC
920XC-13A-UPC-AUSC	89836	Singlemode 1310nm Handheld OTDR	UPC	Australia standard AC/DC Adapter, 100~240V	SC
920XC-13A-APC-NAFC	89837	Singlemode 1310nm Handheld OTDR	APC	American standard AC/DC Adapter, Input: 100~240V	FC
920XC-13A-APC-EUFC	89838	Singlemode 1310nm Handheld OTDR	APC	Europe standard AC/DC Adapter , Input: 100~240V	FC
920XC-13A-APC-JAFC	89839	Singlemode 1310nm Handheld OTDR	APC	Japanese standard AC/DC Adapter, Input: 100~240V	FC
920XC-13A-APC-UKFC	89840	Singlemode 1310nm Handheld OTDR	APC	United Kingdom standard AC/DC Adapter, Input: 100~240V	FC
920XC-13A-APC-AUFC	89841	Singlemode 1310nm Handheld OTDR	APC	Australia standard AC/DC Adapter, 100~240V	FC
920XC-13A-APC-NASC	89842	Singlemode 1310nm Handheld OTDR	APC	American standard AC/DC Adapter, Input: 100~240V	SC
920XC-13A-APC-EUSC	89843	Singlemode 1310nm Handheld OTDR	APC	Europe standard AC/DC Adapter , Input: 100~240V	SC
920XC-13A-APC-JASC	89844	Singlemode 1310nm Handheld OTDR	APC	Japanese standard AC/DC Adapter, Input: 100~240V	SC
920XC-13A-APC-UKSC	89845	Singlemode 1310nm Handheld OTDR	APC	United Kingdom standard AC/DC Adapter, Input: 100~240V	SC
920XC-13A-APC-AUSC	89846	Singlemode 1310nm Handheld OTDR	APC	Australia standard AC/DC Adapter, 100~240V	SC

920XC-15A 1550nm OTDR

MODEL. NO.	UPC NO.	OTDR DESCRIPTION	CONNECTOR POLISH	POWER SUPPLY	OPTICAL CONNECTOR
920XC-15A-UPC-NAFC	89847	Singlemode 1550nm Handheld OTDR	UPC	American standard AC/DC Adapter, Input: 100~240V	FC
920XC-15A-UPC-EUFC	89848	Singlemode 1550nm Handheld OTDR	UPC	Europe standard AC/DC Adapter , Input: 100~240V	FC
920XC-15A-UPC-JAFC	89849	Singlemode 1550nm Handheld OTDR	UPC	Japanese standard AC/DC Adapter, Input: 100~240V	FC
920XC-15A-UPC-UKFC	89850	Singlemode 1550nm Handheld OTDR	UPC	United Kingdom standard AC/DC Adapter, Input: 100~240V	FC
920XC-15A-UPC-AUFC	89851	Singlemode 1550nm Handheld OTDR	UPC	Australia standard AC/DC Adapter, 100~240V	FC
920XC-15A-UPC-NAST	89852	Singlemode 1550nm Handheld OTDR	UPC	American standard AC/DC Adapter, Input: 100~240V	ST
920XC-15A-UPC-EUST	89853	Singlemode 1550nm Handheld OTDR	UPC	Europe standard AC/DC Adapter , Input: 100~240V	ST
920XC-15A-UPC-JAST	89854	Singlemode 1550nm Handheld OTDR	UPC	Japanese standard AC/DC Adapter, Input: 100~240V	ST
920XC-15A-UPC-UKST	89855	Singlemode 1550nm Handheld OTDR	UPC	United Kingdom standard AC/DC Adapter, Input: 100~240V	ST
920XC-15A-UPC-AUST	89856	Singlemode 1550nm Handheld OTDR	UPC	Australia standard AC/DC Adapter, 100~240V	ST
920XC-15A-UPC-NASC	89857	Singlemode 1550nm Handheld OTDR	UPC	American standard AC/DC Adapter, Input: 100~240V	SC
920XC-15A-UPC-EUSC	89858	Singlemode 1550nm Handheld OTDR	UPC	Europe standard AC/DC Adapter , Input: 100~240V	SC
920XC-15A-UPC-JASC	89859	Singlemode 1550nm Handheld OTDR	UPC	Japanese standard AC/DC Adapter, Input: 100~240V	SC
920XC-15A-UPC-UKSC	89860	Singlemode 1550nm Handheld OTDR	UPC	United Kingdom standard AC/DC Adapter, Input: 100~240V	SC
920XC-15A-UPC-AUSC	89861	Singlemode 1550nm Handheld OTDR	UPC	Australia standard AC/DC Adapter, 100~240V	SC
920XC-15A-APC-NAFC	89862	Singlemode 1550nm Handheld OTDR	APC	American standard AC/DC Adapter, Input: 100~240V	FC
920XC-15A-APC-EUFC	89863	Singlemode 1550nm Handheld OTDR	APC	Europe standard AC/DC Adapter , Input: 100~240V	FC
920XC-15A-APC-JAFC	89864	Singlemode 1550nm Handheld OTDR	APC	Japanese standard AC/DC Adapter, Input: 100~240V	FC
920XC-15A-APC-UKFC	89865	Singlemode 1550nm Handheld OTDR	APC	United Kingdom standard AC/DC Adapter, Input: 100~240V	FC
920XC-15A-APC-AUFC	89866	Singlemode 1550nm Handheld OTDR	APC	Australia standard AC/DC Adapter, 100~240V	FC
920XC-15A-APC-NASC	89867	Singlemode 1550nm Handheld OTDR	APC	American standard AC/DC Adapter, Input: 100~240V	SC
920XC-15A-APC-EUSC	89868	Singlemode 1550nm Handheld OTDR	APC	Europe standard AC/DC Adapter , Input: 100~240V	SC

920XC Product Configuration - Model Numbers

920XC-15A 1550nm OTDR (continued)

MODEL. NO.	UPC NO.	OTDR DESCRIPTION	CONNECTOR POLISH	POWER SUPPLY	OPTICAL CONNECTOR
920XC-15A-APC-JASC	89869	Singlemode 1550nm Handheld OTDR	APC	Japanese standard AC/DC Adapter, Input: 100~240V	SC
920XC-15A-APC-UKSC	89870	Singlemode 1550nm Handheld OTDR	APC	United Kingdom standard AC/DC Adapter, Input: 100~240V	SC
920XC-15A-APC-AUSC	89871	Singlemode 1550nm Handheld OTDR	APC	Australia standard AC/DC Adapter, 100~240V	SC

920XC-20C 1310/1550nm OTDR

MODEL. NO.	UPC NO.	OTDR DESCRIPTION	CONNECTOR POLISH	POWER SUPPLY	OPTICAL CONNECTOR
920XC-20C-UPC-NAFC	89872	Singlemode 1310/1550nm Handheld OTDR	UPC	American standard AC/DC Adapter, Input: 100~240V	FC
920XC-20C-UPC-EUFC	89873	Singlemode 1310/1550nm Handheld OTDR	UPC	Europe standard AC/DC Adapter , Input: 100~240V	FC
920XC-20C-UPC-JAFC	89874	Singlemode 1310/1550nm Handheld OTDR	UPC	Japanese standard AC/DC Adapter, Input: 100~240V	FC
920XC-20C-UPC-UKFC	89875	Singlemode 1310/1550nm Handheld OTDR	UPC	United Kingdom standard AC/DC Adapter, Input: 100~240V	FC
920XC-20C-UPC-AUFC	89876	Singlemode 1310/1550nm Handheld OTDR	UPC	Australia standard AC/DC Adapter, 100~240V	FC
920XC-20C-UPC-NAST	89877	Singlemode 1310/1550nm Handheld OTDR	UPC	American standard AC/DC Adapter, Input: 100~240V	ST
920XC-20C-UPC-EUST	89878	Singlemode 1310/1550nm Handheld OTDR	UPC	Europe standard AC/DC Adapter , Input: 100~240V	ST
920XC-20C-UPC-JAST	89879	Singlemode 1310/1550nm Handheld OTDR	UPC	Japanese standard AC/DC Adapter, Input: 100~240V	ST
920XC-20C-UPC-UKST	89880	Singlemode 1310/1550nm Handheld OTDR	UPC	United Kingdom standard AC/DC Adapter, Input: 100~240V	ST
920XC-20C-UPC-AUST	89881	Singlemode 1310/1550nm Handheld OTDR	UPC	Australia standard AC/DC Adapter, 100~240V	ST
920XC-20C-UPC-NASC	89882	Singlemode 1310/1550nm Handheld OTDR	UPC	American standard AC/DC Adapter, Input: 100~240V	SC
920XC-20C-UPC-EUSC	89883	Singlemode 1310/1550nm Handheld OTDR	UPC	Europe standard AC/DC Adapter , Input: 100~240V	SC
920XC-20C-UPC-JASC	89884	Singlemode 1310/1550nm Handheld OTDR	UPC	Japanese standard AC/DC Adapter, Input: 100~240V	SC
920XC-20C-UPC-UKSC	89885	Singlemode 1310/1550nm Handheld OTDR	UPC	United Kingdom standard AC/DC Adapter, Input: 100~240V	SC
920XC-20C-UPC-AUSC	89886	Singlemode 1310/1550nm Handheld OTDR	UPC	Australia standard AC/DC Adapter, 100~240V	SC
920XC-20C-APC-NAFC	89887	Singlemode 1310/1550nm Handheld OTDR	APC	American standard AC/DC Adapter, Input: 100~240V	FC
920XC-20C-APC-EUFC	89888	Singlemode 1310/1550nm Handheld OTDR	APC	Europe standard AC/DC Adapter , Input: 100~240V	FC
920XC-20C-APC-JAFC	89889	Singlemode 1310/1550nm Handheld OTDR	APC	Japanese standard AC/DC Adapter, Input: 100~240V	FC
920XC-20C-APC-UKFC	89890	Singlemode 1310/1550nm Handheld OTDR	APC	United Kingdom standard AC/DC Adapter, Input: 100~240V	FC
920XC-20C-APC-AUFC	89891	Singlemode 1310/1550nm Handheld OTDR	APC	Australia standard AC/DC Adapter, 100~240V	FC
920XC-20C-APC-NASC	89892	Singlemode 1310/1550nm Handheld OTDR	APC	American standard AC/DC Adapter, Input: 100~240V	SC
920XC-20C-APC-EUSC	89893	Singlemode 1310/1550nm Handheld OTDR	APC	Europe standard AC/DC Adapter , Input: 100~240V	SC
920XC-20C-APC-JASC	89894	Singlemode 1310/1550nm Handheld OTDR	APC	Japanese standard AC/DC Adapter, Input: 100~240V	SC
920XC-20C-APC-UKSC	89895	Singlemode 1310/1550nm Handheld OTDR	APC	United Kingdom standard AC/DC Adapter, Input: 100~240V	SC
920XC-20C-APC-AUSC	89896	Singlemode 1310/1550nm Handheld OTDR	APC	Australia standard AC/DC Adapter, 100~240V	SC



Contents of each model number

Instrument (including rechargeable battery, OTDR Trace Viewer software, installation disk, Data transfer cable, AC adapter, protective cover, carrying case, warranty card, CE/FCC certificate, Certificate of calibration, User's manual.



GREENLEE®

A Textron Company

USA	800-435-0786	Fax: 800-451-2632
	815-397-7070	Fax: 815-397-1865
Canada	800-435-0786	Fax: 800-524-2853
International	+1-815-397-7070	Fax: +1-815-397-9247

4455 Boeing Drive • Rockford, IL 61109-2988 • USA • 815-397-7070
 ©2005 Greenlee Textron Inc. • An ISO 9001 Company • Printed in USA
 Greenlee Textron Inc. is a subsidiary of Textron Inc.

www.greenlee.com

MA-4948 1/07