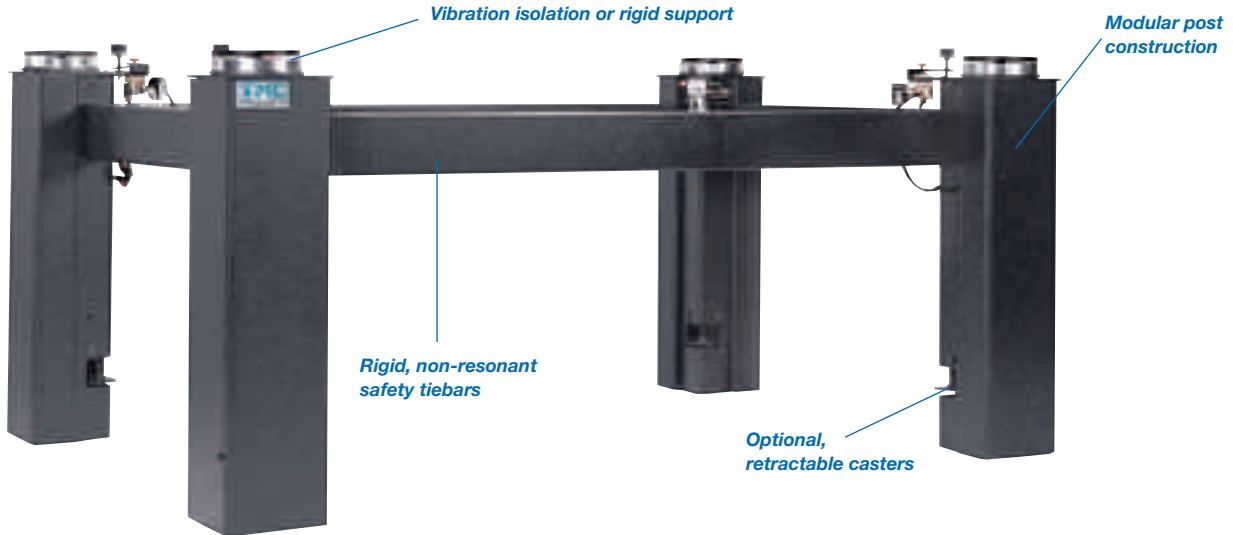


SYSTEM 1

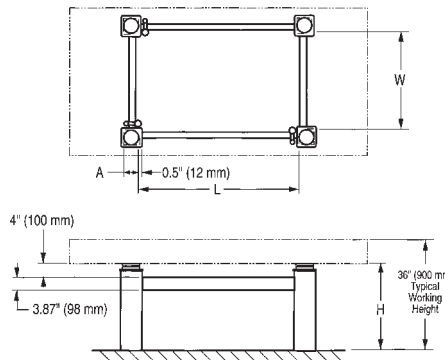
4-Post System with Tiebars

Gimbal Piston™ Isolators or Rigid Supports



The preferred choice for supporting most optical tops is the 4-Post System with safety tiebars. Choose from vibration isolation or rigid support, with or without casters, and from a range of heights and capacities.

How to Order: See instructions on Page 40.



Height Code Ordering Chart

Height Code H	Height		Standard Heights Available	
	in.	mm	Prefix 11 & 12	Prefix 13 & 14
2	12	300		•
3	16	400		•
4	18	450		•
5	22	550		•
6	24	600		•
7	28	700	•	•
8	32	800	•	•

4-Post System Ordering Chart

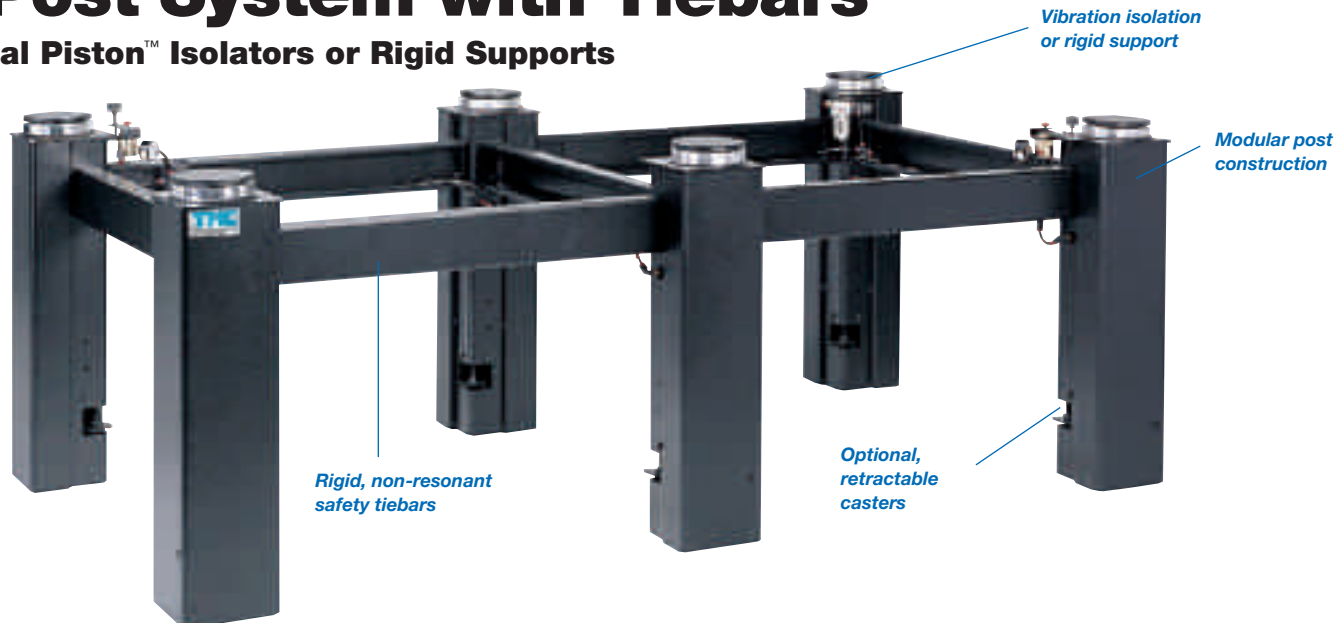
Application: Typical Size of Optical Top		Model Number				H Height: Specify Height Code	A Cross- Section		W Width		L Length		Capacity	
		Gimbal Piston™ Isolators		Rigid Leveling Stand			in.	mm	in.	mm	in.	mm	lbs	kg
in.	mm	w/casters	w/o casters	w/casters	w/o casters									
30 x 36	750 x 900	12-42H-28	12-41H-28	11-42H-28	11-41H-28	See Height Code Ordering Chart	4	100	20	500	26	650	1400	600
30 x 48	750 x 1200	12-42H-29	12-41H-29	11-42H-29	11-41H-29		4	100	20	500	35	875	1400	600
30 x 60	750 x 1500	12-42H-24	12-41H-24	11-42H-24	11-41H-24		4	100	20	500	40	1000	1400	600
30 x 72	750 x 1800	14-42H-14	14-41H-14	13-42H-14	13-41H-14		6	150	15	375	40	1000	4000	2000
30 x 96	750 x 2400	14-42H-15	14-41H-15	13-42H-15	13-41H-15		6	150	15	375	50	1250	4000	2000
30 x 120	750 x 3000	14-42H-16	14-41H-16	13-42H-16	13-41H-16		6	150	15	375	60	1500	4000	2000
36 x 48	900 x 1200	12-42H-89	12-41H-89	11-42H-89	11-41H-89		4	100	26	650	35	875	1400	600
36 x 60	900 x 1500	12-42H-84	12-41H-84	11-42H-84	11-41H-84		4	100	26	650	40	1000	1400	600
36 x 72	900 x 1800	14-42H-24	14-41H-24	13-42H-24	13-41H-24		6	150	20	500	40	1000	4000	2000
36 x 96	900 x 2400	14-42H-25	14-41H-25	13-42H-25	13-41H-25		6	150	20	500	50	1250	4000	2000
36 x 120	900 x 3000	14-42H-26	14-41H-26	13-42H-26	13-41H-26		6	150	20	500	60	1500	4000	2000
40 x 60	1000 x 1500	14-42H-89	14-41H-89	13-42H-89	13-41H-89		6	150	26	650	35	875	4000	2000
40 x 80	1000 x 2000	14-42H-84	14-41H-84	13-42H-84	13-41H-84		6	150	26	650	40	1000	4000	2000
40 x 120	1000 x 3000	14-42H-86	14-41H-86	13-42H-86	13-41H-86		6	150	26	650	60	1500	4000	2000
48 x 60	1200 x 1500	14-42H-39	14-41H-39	13-42H-39	13-41H-39		6	150	30	750	35	875	4000	2000
48 x 72	1200 x 1800	14-42H-34	14-41H-34	13-42H-34	13-41H-34		6	150	30	750	40	1000	4000	2000
48 x 96	1200 x 2400	14-42H-35	14-41H-35	13-42H-35	13-41H-35		6	150	30	750	50	1250	4000	2000
48 x 120	1200 x 3000	14-42H-36	14-41H-36	13-42H-36	13-41H-36		6	150	30	750	60	1500	4000	2000
48 x 144	1200 x 3600	14-42H-37	14-41H-37	13-42H-37	13-41H-37		6	150	30	750	70	1750	4000	2000
59 x 60	1500 x 1500	14-42H-49	14-41H-49	13-42H-49	13-41H-49		6	150	40	1000	35	875	4000	2000
59 x 72	1500 x 1800	14-42H-44	14-41H-44	13-42H-44	13-41H-44	6	150	40	1000	40	1000	4000	2000	
59 x 80	1500 x 2000	14-42H-44	14-41H-44	13-42H-44	13-41H-44	6	150	40	1000	40	1000	4000	2000	
59 x 96	1500 x 2400	14-42H-45	14-41H-45	13-42H-45	13-41H-45	6	150	40	1000	50	1250	4000	2000	
59 x 120	1500 x 3000	14-42H-46	14-41H-46	13-42H-46	13-41H-46	6	150	40	1000	60	1500	4000	2000	
59 x 144	1500 x 3600	14-42H-47	14-41H-47	13-42H-47	13-41H-47	6	150	40	1000	70	1750	4000	2000	

*Casters can only be used with post heights of 18 in. and taller.

SYSTEM 1

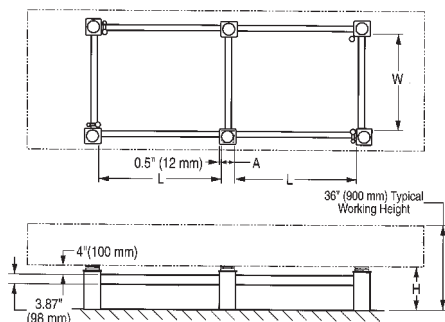
6-Post System with Tiebars

Gimbal Piston™ Isolators or Rigid Supports



Most tops more than 10 ft (3 m) long are best supported by the 6-Post System with Tiebars. In addition to the higher weight capacity, the structural characteristics of the top are enhanced by the additional support points.

How to Order: See instructions below.



Height Code Ordering Chart

Height Code H	Height		Standard Heights Available Prefix 13 & 14
	in.	mm	
2	12	300	•
3	16	400	•
4	18	450	•
5	22	550	•
6	24	600	•
7	28	700	•
8	32	800	•

6-Post System Ordering Chart

Application: Typical Size of Optical Top		Model Number				H Height: Specify Height Code	A Cross- Section		W Width		L Length		Capacity	
		Gimbal Piston™ Isolators		Rigid Leveling Stand			in.	mm	in.	mm	in.	mm	lbs	kg
in.	mm	w/casters	w/o casters	w/casters	w/o casters	See Height Code Ordering Chart	in.	mm	in.	mm	in.	mm	lbs	kg
48 x 120	1200 x 3000	14-62H-33	14-61H-33	13-62H-33	13-61H-33		6	150	30	750	30	750	6000	3000
48 x 144	1200 x 3600	14-62H-34	14-61H-34	13-62H-34	13-61H-34		6	150	30	750	40	1000	6000	3000
48 x 168	1200 x 4200	14-62H-35	14-61H-35	13-62H-35	13-61H-35		6	150	30	750	50	1250	6000	3000
48 x 192	1200 x 4800	14-62H-36	14-61H-36	13-62H-36	13-61H-36		6	150	30	750	60	1500	6000	3000
59 x 120	1500 x 3000	14-62H-43	14-61H-43	13-62H-43	13-61H-43		6	150	40	1000	30	750	6000	3000
59 x 144	1500 x 3600	14-62H-44	14-61H-44	13-62H-44	13-61H-44		6	150	40	1000	40	1000	6000	3000
59 x 168	1500 x 4200	14-62H-45	14-61H-45	13-62H-45	13-61H-45		6	150	40	1000	50	1250	6000	3000
59 x 192	1500 x 4800	14-62H-46	14-61H-46	13-62H-46	13-61H-46		6	150	40	1000	60	1500	6000	3000

How to Order:

1. Determine whether vibration isolation is required or whether rigid, non-resonant support is adequate.
2. Choose whether or not the caster option is desired.*
3. Find the size of the optical top to be supported in the left column of the ordering chart.
4. Pick the model number from the appropriate column.
5. Assign the height code (H) to the catalog number based on the desired height of the table surface and thickness of the optical top.
6. Ensure that the support has adequate capacity by comparing the capacity to the optical top weight plus equipment load. Top weight is equal to the top area times the weight factor from the bottom of the optical top size charts. The isolator capacity should be at least double the total load.
7. Contact TMC when in doubt and for unusually sized tops.

*Casters can only be used with post heights of 18 in. and taller.

SYSTEM 1

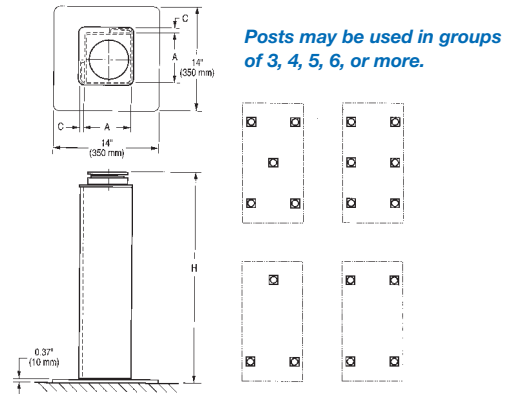
Free-Standing Individual Posts

Gimbal Piston™ Isolators or Rigid Supports

Patented Gimbal Piston™ or rigid leveler

Baseplates with leveling screws are available as an option. (Change the fourth digit of the catalog number from "3" to "4".)

Oversize steel base plate for maximum stability



Free-Standing Posts are a convenient alternative to posts with tiebars when open access between the posts is necessary. Though generally configured in sets of four and six legs, other configurations include three and five legs.

The independent posts offer the maximum flexibility in post positioning with respect to the optical top.

Free-Standing Posts are especially convenient for supporting large coupled table systems.

Single-Post System Ordering Chart

Catalog Number		H		A		C		Capacity Per Post	
Gimbal Piston Isolator	Rigid Post	in.	mm	in.	mm	in.	mm	lbs	kg
12 - 137 - 00	11 - 137 - 00	28	700	4	100	1/2	13	350	150
12 - 138 - 00	11 - 138 - 00	32	800	4	100	1/2	13	350	150
14 - 132 - 00	13 - 132 - 00	12	300	6	150	1/2	13	1000	500
14 - 133 - 00	13 - 133 - 00	16	400	6	150	1/2	13	1000	500
14 - 134 - 00	13 - 134 - 00	18	450	6	150	1/2	13	1000	500
14 - 135 - 00	13 - 135 - 00	22	550	6	150	1/2	13	1000	500
14 - 136 - 00	13 - 136 - 00	24	600	6	150	1/2	13	1000	500
14 - 137 - 00	13 - 137 - 00	28	700	6	150	1/2	13	1000	500
14 - 138 - 00	13 - 138 - 00	32	800	6	150	1/2	13	1000	500
16 - 133 - 00	Contact TMC for 2500 lb (1100 kg) Rigid Post details	16	400	8	200	0	0	2500	1000
16 - 135 - 00		22	550	8	200	0	0	2500	1000
16 - 137 - 00		28	700	8	200	0	0	2500	1000

Note: Free-Standing Individual Posts are incompatible with retractable casters. 12 in. tall posts do not incorporate baseplates.

Height Control Valve Kit Ordering Chart

Catalog Number	Valve Kit
SV-12	Standard Valve Kit for (4) 12-Series Posts
SV-14	Standard Valve Kit for (4) 14-Series Posts
SV-16	Standard Valve Kit for (4) 16-Series Posts

How to Order:

- Determine whether vibration isolation is required or whether rigid, non-resonant support is adequate.
- Calculate the required capacity by adding the equipment load to the optical top weight. Top weight is equal to top area times the weight factor from the bottom of the optical top selection charts. Generally, 2 in. (50 mm) and 4 in. (100 mm) thick tops use 11 and 12 prefix posts, and 8 in. (200 mm) and 12 in. (300 mm) tops require 13 and 14 prefix tops.
- Choose the indicated catalog number from the ordering chart.
- 4-Post Systems are recommended for most applications. Other configurations require that total capacity exceeds optical top mass plus equipment load by a factor of 2. Choose the desired number of posts.
- Leveling screws may be provided in the corners of the baseplate. This optional feature is of great assistance on larger tables and in labs with uneven floors. To specify, change the fourth digit of the catalog number from "3" to "4" (for example, 14-135-00 becomes 14-145-00). Note that this will add one inch (25 mm) to the overall height.
- Height control valve kits (included with 4-Post and 6-Post Systems) must be specified when ordering individual posts. Choose valve kit from the bottom of the chart corresponding to the chosen posts. Note that if more than 4 posts are combined, a suffix must be added to the valve kit corresponding to the number of posts (e.g., for 8 of 14-134-00, the correct valve kit is SV-14-8).
- Contact TMC when in doubt and for unusual configurations.